

Specifications
Container type

Cleaning JOLLY

CONTENTS

PAGE	Description	SUBJECT
1/3	Cover	
	Contents Distribution Purpose	
2/3	General characteristics	Tank body
		Rubber coating
	Specification and tolerance	body material
		rubber coating
		weight and capacity / tank main dimensions / stems / plugs
3/3	General characteristics	dip tube / identification / marking
	Draft	section / led standard / valve

DESTINATION

This report will be handed out to :

N°	DESTINATION
1	Customer
2	A. E. B. srl Managing Director
3	A. E. B. srl Sales department
4	A. E. B. srl Quality Assurance department

No part of this report may be reproduced, translated, stored in any retrieval system or transmitted in any form or by any means without the prior written permission of A.E.B. srl

PURPOSE

This report describes some characteristics of design, production and performances of the tank "Jolly".
Acceptance tests on raw material, tests during production and on the final product guarantee that A.E.B. tanks meet customer's specifications.

BASIC INFORMATION

TANK BODY

Tanks is carried out by assembling: upper part (rs.steel), lower part (rubber bottom) and shell (calendared ferrule). The assembling of the different metallic parts is made by round and longitudinal welding. All weldings on the tank are automatically made, following TIG system in a inert atmosphere without any deposit of material. On the top of the tank there is an oval opening (mouth) which allow the closing of the tank by the lid . On the bottom there is a sump to enhance the draining off. Printed on the stainless steel of the external surface of the body, there are information about the manufacturer, the capacity of the tank and its identification numbers. The lid made in pressed stainless steel, is finished with handle, and with pull ring relief valve, if required

RUBBER COATING

The extremity of the tank (bottom) is covered with black hot vulcanised natural rubber bonded onto the steel. Four openings in the bottom skirt enhance the drain of water when the keg is upside down. The maximum outside diameter of the rubber parts is larger than the one of the body.

SPECIFICATION AND TOLERANCE

BODY MATERIALS

The tank model "Jolly" is made of AISI type 304 stainless steel (1.4301) with No. 2B mill finish steel sheet which fulfils ASTM A240 specification. All inside surfaces are smooth to prevent any possible dirt or contamination from remaining inside after washing and sterilizing. Stainless steel does not react to magnetic attraction and its colour does not change due to cleaning or sterilizing.

STANDARD DENOMINATION	SPECIFICATION
AISI 304	AMERICAN
DIN 1.4301	GERMAN
AFNOR Z6 CN 18.09	FRENCH
BS 304 S 15	ENGLISH

The top and the bottom are deep-drowned beginning from a stainless steel disk with a thickness of 1mm before the pressing. The body has a thickness of 0,70 mm

SPECIFICATION AND TOLERANCE

RUBBER COATING

Skirt is made of solid black vulcanized rubber. This function is to protect the stainless steel parts, to permit the rolling of the tank and minimize damage by impact. The rubber fulfils ASTM D2000 (M2AA910F17P2Z1Z2Z3Z4Z5Z6Z7) specification

GASKET RUBBER

All the gaskets are made EPDM - alimentary material colour black.

WEIGHT and CAPACITY

Characteristics	18 ℓ	9 ℓ
Weight	~ 4,0 kg ± 0.20	~ 3,5 kg ± 0.20
Capacity till gas dip tube	19 l ± 0.20	10 l ± 0.20

MAIN DIMENSIONS

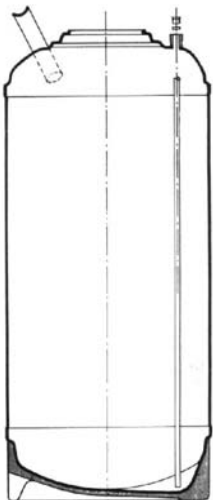
Characteristics	18 ℓ	9 ℓ
Total height	560 ± 2 mm	330 ± 2 mm
Skirt external diameter	232 ± 2 mm	232 ± 2 mm
Stainless steel external diameter	228,6 ± 1 mm	228,6 ± 1 mm

IDENTIFICATION / MARKING

Standard marking and identification on tank body :

A.E.B. Srl
MADE IN ITALY
ANNO 6/2006
N. 005058

GENERAL CHARACTERISTICS



GENERAL CHARACTERISTICS

